



# THE LEXELL BLUE DIFFERENCE

Deltek

Premier Partner

WWW.LEXELLBLUE.COM

## UNLOCKING FINANCIAL CLARITY:

### THE TOP 10 BENEFITS OF A COSTPOINT INDIRECT COST ASSESSMENT

Deltek Costpoint ERP system provides robust functionality designed to accurately allocate indirect costs—such as overhead and administrative expenses—across various projects or contracts. By automating this process, it ensures precise cost distribution, enhancing financial reporting and compliance with regulatory standards.

Lexell Blue provides assessments focused on indirect cost allocations. The assessment includes:

- Evaluating foundational Costpoint architecture, such as accounts and orgs
- Reviewing pool setup to ensure costs are being properly allocated and accurately flow to the appropriate cost objective

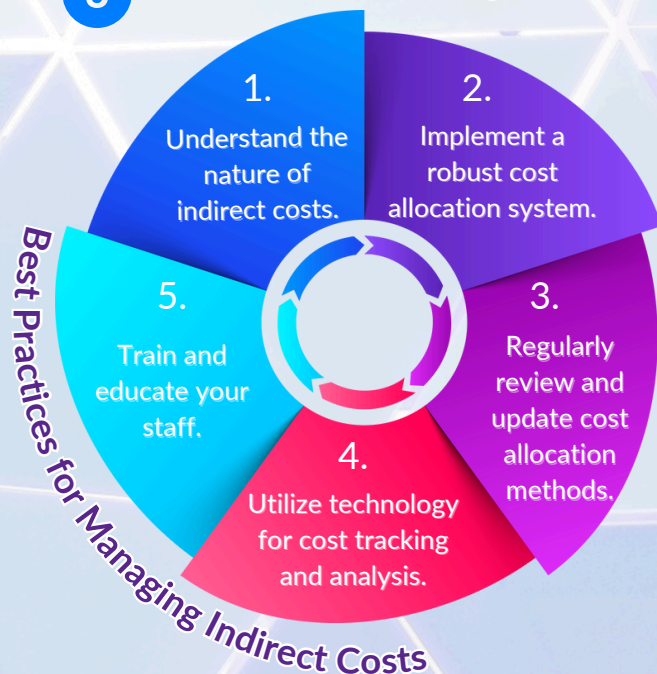
Proper indirect cost allocation setup provides many benefits to help businesses achieve more accurate project costing, better resource planning, and effective financial management, which is essential for maintaining profitability and meeting regulatory requirements.

#### Potential benefits from our assessment include:

- 1 Accurate Cost Allocation
- 2 Regulatory Compliance
- 3 Improved Financial Reporting
- 4 Enhanced Budgeting & Forecasting
- 5 Cost Control & Management



- 6 Audit Readiness
- 7 Profitability Analysis
- 8 Streamlined Cost Management
- 9 Better Resource Planning
- 10 Competitive Advantage & Pricing Strategies



CONTACT US TO LEARN MORE  
INFO@LEXELLBLUE.COM