



THE LEXELL BLUE DIFFERENCE PROJECT MANAGEMENT

Deltek.

Premier Partner



With you All the Way

You can count on Lexell Blue project managers to be your partner from kickoff through project close-out. Our goal is to provide the leadership, knowledge, expertise, and tools you need to execute effectively, the metrics to monitor, and the options to manage risk. With Lexell Blue by your side, your project will be in good hands!



On Time, Every Time

Lexell Blue project managers have extensive experience successfully delivering projects of varying degrees of complexity utilizing our proprietary approach to planning and managing projects. Our processes are tried and tested, maximize efficiency, minimize risk, and will assure your organization's project's success.



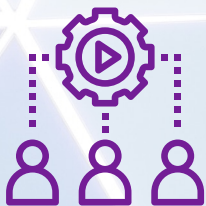
Customizable Tools

Efficiency is critical to success in any project, and Lexell Blue has created an arsenal of tools for you to use and customize for your project so you don't have to reinvent the wheel. We have you covered on trackers, templates, data validation and test cases, and more.



Transformation Focused

We recognize that new systems implementations and changes to business processes can be highly disruptive to your organization. Lexell Blue will partner with your organization to coordinate communications and training for your stakeholders to ensure a smooth transition.



Concierge Support

Lexell Blue's high standard of service continues beyond your go-live with our white glove service. Our business experts bring their years of experience in the industry and with Deltek to assist you with questions related to your project. We genuinely care about your success and we will tailor our support to your unique needs.

Contact Us - Info@LexellBlue.com



Lauren Dunn, CPA



Jamie Hill, CPA, MBA



Joe Shepherd



Megan Skerl, PMP

www.LexellBlue.com